

The financial burden of imaging tests conducted in the emergency department of a teaching hospital: a brief report



Sahar Mirbaha¹, Mohammadmehdi Forouzanfar¹, Amin Saberinia¹, Amir Salimi², Hamid Kariman³, Mozghan Farmahini Farahani^{4*}

¹Department of Emergency Medicine, Shohadaye Tajrish Hospital, Shahid Beheshti University of Medical Sciences, Tehran, Iran

²School of Medicine, Shahid Beheshti University of Medical Sciences, Tehran, Iran

³Department of Emergency Medicine, Imam Hosein Hospital, Shahid Beheshti University of Medical Sciences, Tehran, Iran

⁴Department of Emergency Medicine, Sina Hospital, Tehran University of Medical Sciences, Tehran, Iran

Received: 11 July 2019

Accepted: 5 August 2019

Published online: 16 August 2019

***Corresponding author:** Mozghan Farmahini Farahani, Department of Emergency Medicine, Sina Hospital, Tehran University of Medical Sciences, Tehran, Iran
Email: farahanimozghan@yahoo.com

Competing interests: None.

Funding information: None.

Citation: Mirbaha S, Forouzanfar M, Saberinia A, Salimi A, Kariman H, Farmahini Farahani M. The financial burden of imaging tests conducted in the emergency department of a teaching hospital: a brief report. *Journal of Emergency Practice and Trauma* 2020; 6(1): 43-46. doi: 10.15171/jept.2019.14.

Abstract

Objective: Each imaging technique has a special application and usage, and should be used in the right situation. Physicians choose the type of imaging technique by considering the type of tissue and the benefits and disadvantages of the imaging method as well as its financial burden on the patient. The aim of this study was to estimate the cost of imaging tests performed in the emergency department (ED) of an educational hospital and determine their financial burden on both the patients and the healthcare system of the country.

Methods: This retrospective descriptive cross-sectional single-center study was conducted in Shohadaye Tajrish, an educational hospital, during one year. The study population consisted of all patients who had undergone some type of imaging (CT scan, ultrasound, radiography, magnetic resonance imaging [MRI]) in the ED. The information was collected using a predesigned checklist. The costs of a variety of imaging methods for patients referred to the ED were calculated using different types of accounting units and PACS system.

Results: The number of patients who visited the ED of the studied hospital during a one year period was 63 507. The total cost of performing different types of imaging methods in the studied center throughout the one-year target period was 44 018 695 695 Rials (\approx \$US 423 745) (59.27% of which was spent on CT scan, 16.09% on ultrasound, 13.75% on plain radiography and 10.87% on MRI).

Conclusion: According to the collected data, the total cost of radiology was 44018695695 Rials. The highest cost was related to CT scan modality, and the lowest belonged to MRI.

Keywords: Costs, Cost analysis, Emergency service, Hospital, Radiology, Iran

Introduction

One of the most important units of each emergency department (ED) is the radiology unit, which plays an important role in the diagnostic process of patients. There are several types of radiologic imaging modalities and physicians choose the most appropriate one based on patients' condition. Of course, the costs of these methods are different. By measuring their prices and comparing them, we can determine their financial burden on patients and the healthcare system (1). It seems that the use of imaging modalities in ED is dramatically increasing (2,3). In a 15-year review, Li et al reported that computed tomography (CT) scan had the highest cost (4). Insufficient information about the imaging cost leads

to overuse of radiological modalities. It could also lead to high depreciation of devices in health centers. On the other hand, one of the reasons for patients not going to the hospital and not pursuing healthcare is financial costs of imaging tests. With a simple review, we can estimate the amount of these costs and make a plan to reduce them (5). Therefore, this study was designed to determine the financial burden of the imaging tests conducted in the ED of an educational hospital on both the patients and the healthcare system.

Methods

This study is a retrospective cross-sectional, single center study conducted from April 2017 until March 2018 in



Shohadaye Tajrish hospital, an educational hospital located in Tehran, Iran.

The study population consisted of all patients who underwent any type of imaging (CT scan, ultrasound, X-ray, magnetic resonance imaging [MRI]) in the ED. In this study, age and sex limitations were not considered, and no exclusion criteria were considered for the study.

Data collection was done using a checklist. This checklist consisted of data regarding the type of imaging method, insurance coverage and costs. The costs of various imaging methods (CT scan, MRI, ultrasound, and X-ray) performed for patients referred to the ED during the one-year period were extracted from the hospital PACS system. Total cost of the conducted imagings and also each type of various modalities were calculated. Thereafter, the share of each type of imaging from the total income of the ED was calculated. All the costs are reported in Iranian Rial. In order to report costs in US dollars, each US dollar was calculated based on the average price of dollars reported by the Central Bank of Iran (1 US dollar = 103 880 Iranian Rials) during the period considered.

Statistical analysis was performed using SPSS software version 21. By comparing the cost of each method, the financial burden of each of the imaging methods was presented separately. To describe the continuous variables, mean, standard deviation, median, and intermediate quadrant were used. To describe the categorical variables, frequency and percentages were used.

Results

The number of patients who visited the ED of the studied hospital during the year the research was performed was 63507. The total cost of performing different types of imaging methods was 44 018 695 695 Rials (\approx US 423 745); 59.27% was due to CT scan, 16.09% due to ultrasound, 13.75% due to plain X-ray, and 10.87% due to MRI. Accordingly, the highest income of the hospital through imaging belonged to CT scan modality and the lowest belonged to MRI. Details of the cost of imaging in various modalities are presented in Figure 1. The cost of imaging using different modalities was calculated by determining the patient's share of the total amount in Table 1.

In Figure 2, the cost of each modality to the total income of the ED is shown and compared. Based on the findings, the income from CT scan was 22.04% of the total income of the ED. This rate was 5.98% for sonography, 5.11% for plain x-ray, and 4.04% for MRI.

The CT scan modality included 41 different types. In total, CT scans were done 28081 times (442 times per 1000 visits) for a total of 22472 patients (Figure 3). This indicates that it was repeated in 5609 cases. In 26710 times, one of the 8 most common types of CT scans was performed. Five people had no insurance and 99.98% of the cases were covered by insurance. The share of patients from the total cost was 5.97% (Table 1).

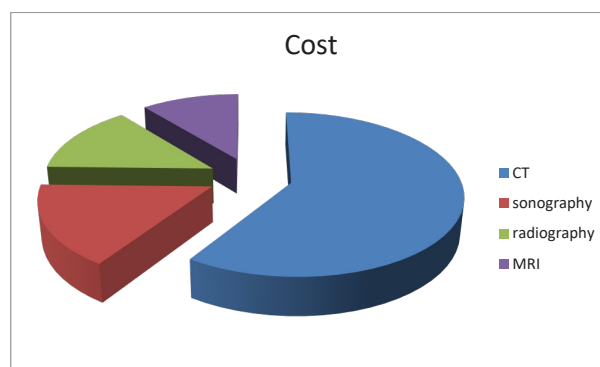


Figure 1. Contribution of each type of imaging to the total cost of imaging tests.

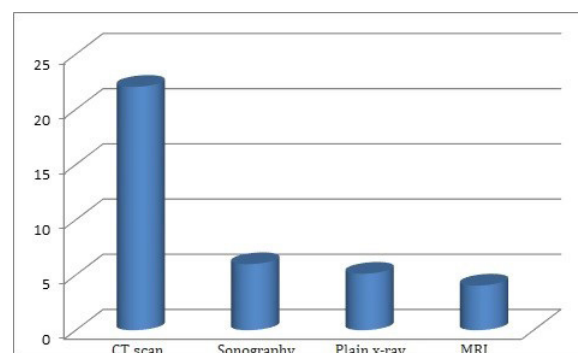


Figure 2. Percentage of the total income through each type of imaging to the total income of the emergency department.

Ultrasonography modality included 45 different types. Overall, ultrasonography was performed 14 189 times (223 times per 1000 visits) for a total of 13 886 patients, which means that it was repeated in 200 cases (Figure 4). In 11 744 times, one of the 8 most common types of ultrasonography was carried out. Two people had no insurance and 99.98% of the cases were covered by insurance. The share of patients in the costs of this section was 10.03% .

The plain radiography modality included 53 different types. A total of 35 269 orders were placed for plain radiography (555 times per 1000 visits), which were performed on 33 852 patients, this means that there were 1417 repetitions (Figure 5). In 28 235 instances, 8 most common types of plain radiography were used. Three patients did not have insurance and 99.99% were covered by insurance. The share of patients in the costs of this section was 8.74%.

The MRI modality included 27 different types. Overall, MRI was performed 4870 times (77 times per 1000 visits) for a total of 4810 patients, which means that there were 60 repetitions (Figure 6).. In 3957 times the MRI performed was one of the most common 5 MRI types. In this section, no one lacked insurance and 100% were covered by insurance. The share of patients in the costs of this section was 9.68%.

Table 1. The cost of imaging based on different modalities

	Type of modality			
	CT scan	Sonography	X-ray	MRI
Total number	28081	14189	35269	4870
Number per 1000 patient visits	442.17	223.37	555.35	76.68
Total cost [Rials (≈US \$)]	26093524807 (2512)	7082765856 (6818)	6053624692 (5828)	4788780340 (4610)
Patients' share (%)	5.97	10.03	8.74	9.68

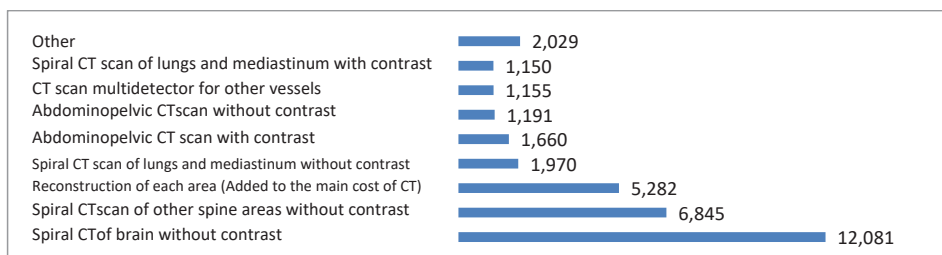


Figure 3. The frequency of CT scans performed in the emergency department

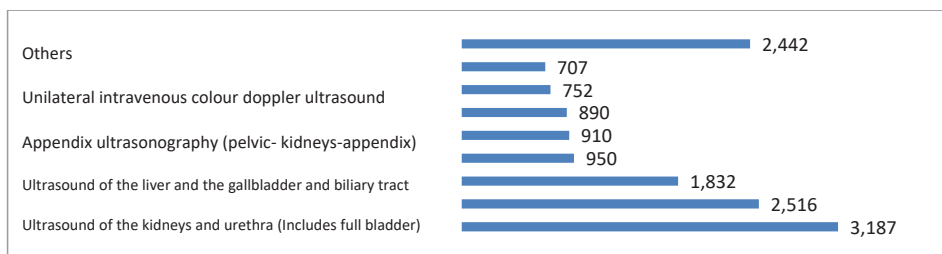


Figure 4. The frequency of ultrasonographies performed in the emergency department.

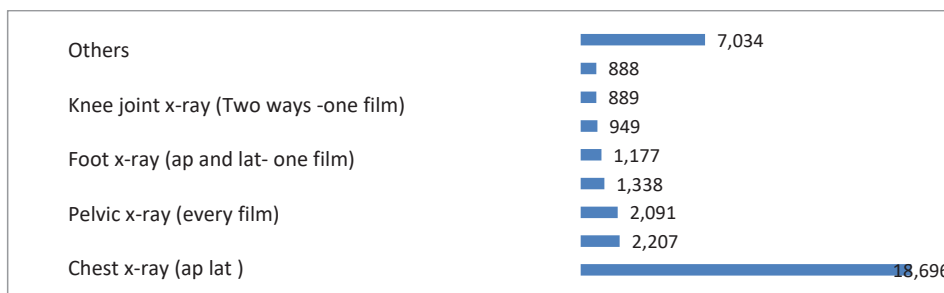


Figure 5. The frequency of radiographies performed in the emergency department

Discussion

According to the present study, throughout the study period, the highest cost of radiological imaging modalities among the four main types performed in the ED belonged to CT scan, followed by ultrasonography and radiography; and MRI was considered to be the radiology modality with the lowest cost.

The study by Raja et al suggests that in recent years, the use of ultrasound and MRI has increased, and the use of CT scan and plain radiography has been reduced (6). However, according to data obtained from our study, in

Iran, CT scan is still used more than other modalities. In another study by Li et al, which was a comprehensive review of the past 15 years, CT scan had the highest incomes and costs in radiology throughout the year (4), which is similar to the result of our study. The results of Ronkainen’s paper reporting a short-term study indicated that MRI was the most expensive radiology modality, but due to the greater use of CT scan compared to MRI, the highest cost and financial burden for the patients belonged to CT scan (7). This is also in line with the results of our research. In addition, in a study

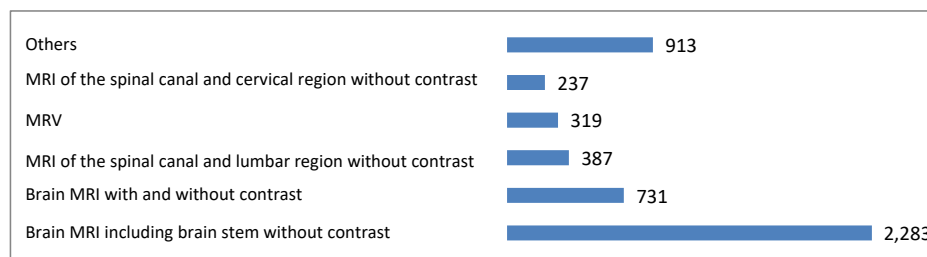


Figure 6. The frequency of MRIs performed in the emergency department.

by Rhea, a comparison was made between MRI and CT costs and just like our study, CT scan had the highest cost associated with radiology (8). In the study conducted by Hess et al in 2014, the use of CT had increased in the years 2000-2010 (9). Additionally, in the Oh HY study, in 2012, the use of the CT scan had increased by 255% (10). When comparing the statistics of the study by Quaday et al (11) with our study, the use of CT scan is higher in our center. Our study suggests that in addition to increasing the cost of treatment for patients, the use of radiological instruments can expose them to ionizing radiation, which has destructive effects, and will increase the wear and tear of the devices and reduce their lifespan, and all of these increase the cost of the healthcare in the country. Therefore, training of doctors on this subject is necessary.

Conclusion

According to the collected data, the total cost of radiology was 44 018 695 695 Rials (\approx \$US 423 745) (59.27% belonged to CT scan, 16.09% to ultrasonography, 13.75% to plain radiography, and 10.87% to MRI). The highest income/cost belonged to CT modality, and the lowest belonged to MRI. The rate of using these modalities in our center is much higher than other statistics reported.

Authors contribution

All the authors met the standards of authorship based on the recommendations of the International Committee of Medical Journal Editors.

Ethical issues

The study was ethically approved by the ethics committee of Shahid Beheshti University of Medical Sciences (ethics No. Ir.sbm. msp.rec.1396.494). The ethical standards, including the confidentiality of the names of the patients under investigation, were observed at all stages of the implementation of this study.

Acknowledgment

Thanks to all the colleagues who worked on this project.

References

1. Al-Malki MA, Abulfaraj WH, Bhuiyan SI, Kinsara AA. A study on radiographic repeat rate data of several hospitals in Jeddah. *Radiat Prot Dosimetry* 2003; 103(4): 323-30. doi: 10.1093/oxfordjournals.rpd.a006149.
2. Mills AM, Raja AS, Marin JR. Optimizing diagnostic imaging in the emergency department. *Acad Emerg Med* 2015; 22(5): 625-31. doi: 10.1111/acem.12640.
3. Baratloo A, Talebian MT, Mirbaha S, Bagheri-Hariri S. Reducing Unnecessary CT Scanning in Head Trauma of Pediatric Patients: A Narrative Review. *J Pediatr Rev* 2019; 7(2): 99-104. doi: 10.32598/jpr.7.2.99.
4. Li Z, Zhang X, Müller H, Zhang S. Large-scale retrieval for medical image analytics: A comprehensive review. *Med Image Anal* 2018; 43: 66-84. doi: 10.1016/j.media.2017.09.007.
5. Lacy NL, Paulman A, Reuter MD, Lovejoy B. Why we don't come: patient perceptions on no-shows. *Ann Fam Med* 2004; 2(6): 541-5. doi: 10.1370/afm.123.
6. Raja AS, Ip IK, Sodickson AD, Walls RM, Seltzer SE, Kosowsky JM, et al. Radiology utilization in the emergency department: trends of the past 2 decades. *AJR Am J Roentgenol* 2014; 203(2): 355-60. doi: 10.2214/ajr.13.11892.
7. Ronkainen J. Costs in today's radiology: aBC analysis of typical situations in the transitional period. University of Oulu; 2007.
8. Rhea JT. Reducing hospital emergency department costs through aggressive use of diagnostic imaging. *Emerg Radiol* 1998; 5(3): 129-34. doi: 10.1007/bf02749096.
9. Hess EP, Haas LR, Shah ND, Stroebel RJ, Denham CR, Swensen SJ. Trends in computed tomography utilization rates: a longitudinal practice-based study. *J Patient Saf* 2014; 10(1): 52-8. doi: 10.1097/PTS.0b013e3182948b1a.
10. Oh HY, Kim EY, Kim JE, Kim YJ, Choi HY, Cho J, et al. Trends of CT use in the pediatric emergency department in a tertiary academic hospital of Korea during 2001-2010. *Korean J Radiol* 2012; 13(6): 771-5. doi: 10.3348/kjr.2012.13.6.771.
11. Quaday KA, Salzman JG, Gordon BD. Magnetic resonance imaging and computed tomography utilization trends in an academic ED. *Am J Emerg Med* 2014; 32(6): 524-8. doi: 10.1016/j.ajem.2014.01.054.